

**e-STUDIO5506AC**

**e-STUDIO6506AC**

**e-STUDIO7506AC**

## Product brochure

---

- > Fully customisable A3 multifunction colour systems for impeccable document output at a speed of up to 75 ppm in colour and 85 ppm in monochrome.
- > A standard Dual Scan Document Feeder for fast and reliable document processing at up to 240 ipm.
- > Advanced media handling combined with superb image quality allow easy in-house creation of a large range of professionally looking documents.



# CONNECT. INTEGRATE. SIMPLIFY.

## Technology for every office, delivering advanced functionality, ease of use and peace of mind.

Every industry has unique workflow needs. Toshiba has developed customisable MFPs to make your job easier. Intuitive and smartly integrated, our products simplify complex tasks and give you control while providing the reliability Toshiba is known for.

Toshiba's latest series delivers on our promise of Together Information – our commitment to collaborate with clients in order to provide tailored, cost-effective solutions to meet specific print, document management and content needs while helping you to meet your green objectives.



## Simple, smart and stylish.

A new 22.9 cm (9") tablet-style touch screen with an embedded web browser is easy to use and customisable to meet your needs. And, it is part of the bold new look being introduced across the new e-STUDIO series.

## Sleeker, faster, and more versatile than ever.

Toshiba's high-end A3 colour line-up is as impressive on the outside as it is on the inside. Its ultra-modern look houses the latest innovative technology, like brilliant quality delivered at up to 75 pages per minute in colour as well as at up to 85 pages per minute in monochrome.

- > Advanced Toshiba e-BRIDGE controller technology for high-quality document output with a resolution of up to 1,200 dpi x 1,200 dpi for colour and up to 3,600 x 1,200 dpi for monochrome
- > Speeds of 55, 65 & 75 ppm in colour and 65, 75 & 85 ppm in monochrome
- > High-speed, high-capacity Dual Scan Document Feeder for amazing document processing
- > RGB substitution allows accurate colours with office applications
- > Auto-calibration ensures consistency of colour across small and large print jobs

Improve productivity and connectivity while simplifying the overall workflow.

# TOSHIBA INNOVATION AT ITS FINEST.

When it comes to seamless workflow and simplified integration, the e-STUDIO7506AC series represents the finest Toshiba has to offer. The latest e-BRIDGE Next technology enables complete third-party integration and support for internally driven solutions.

AirPrint and Mopria support means mobile users can print to the MFP with ease. The e-BRIDGE Print & Capture app provides additional capabilities including the ability to scan from the MFP back to your mobile device.

## Cloud Support

New Scan-to-Cloud and Cloud Print capabilities increase productivity by allowing users to access, store and print documents remotely from the MFP. Whether it's Dropbox, Microsoft OneDrive or Google Drive, the new e-STUDIO7506AC series makes scanning to or printing from these cloud-based locations a breeze.

The support for Google Cloud Print enables easy printing to the MFP from wherever you may be. Print jobs can be sent from outside the network environment without the need to install a printer driver.

## Advanced Security

Even more important than functionality is the security offered by the e-STUDIO7506AC series. Such technological advancements include:

- > The self-encrypting Toshiba Secure HDD, which provides top level security
- > Optional security functions to make the systems compliant with IEEE2600.1 and meet the EAL3 Common Criteria requirements
- > IPsec to securely encrypt data sent to and from the MFP

## Environmental Responsibility

Because we have been working to protect the environment as well as your security, you can rest assured Toshiba has what it takes to protect both.

- > RoHS compliant; use of recycled plastics and a low-power Super Sleep Mode to save resources
- > Being ENERGY STAR Tier 2 compliant means the systems meet the latest, most stringent environmental requirements



# INNOVATIVE FEATURES, VERSATILE CONNECTIVITY.

The Toshiba e-STUDIO7506AC series helps workgroups connect, integrate and simplify while improving efficiency, productivity and the professionalism of presentations.

**Advanced e-BRIDGE Technology** enables the MFP to drive Toshiba's internally developed embedded solutions or those from a third party with ease.

**High, Robust Speeds** include 55/65/75 brilliant colour pages per minute and 65/75/85 monochrome pages per minute, respectively.

**Print Around** eliminates printing bottlenecks by allowing other print jobs to go around one job that's held-up due to requiring a specific paper size, type or, in some cases, colour toner.

**Job Reservation** will queue up multiple copy or print jobs so users can send jobs whenever.

**Toner Change On-The-Fly** allows you to replace the toner cartridges while the MFP is printing.

**Embedded Optical Character Recognition (OCR)** simplifies the creation of searchable PDFs or prepares for editable document formats such as Microsoft Word.

**Scan-to and Print-from USB** lets you print straight from your USB drive or scan documents to it.

**Bluetooth/Wi-Fi Option** to simplify workflow processes at the MFP and enable Wi-Fi Direct printing — ideal for mobile users.

**Card Readers** for these models are optional and can even be installed discreetly behind the cover of the systems. They not only give you fast and convenient access to your print jobs but also increases data security.



Customised to display up to 18 icons per page and with a different background.



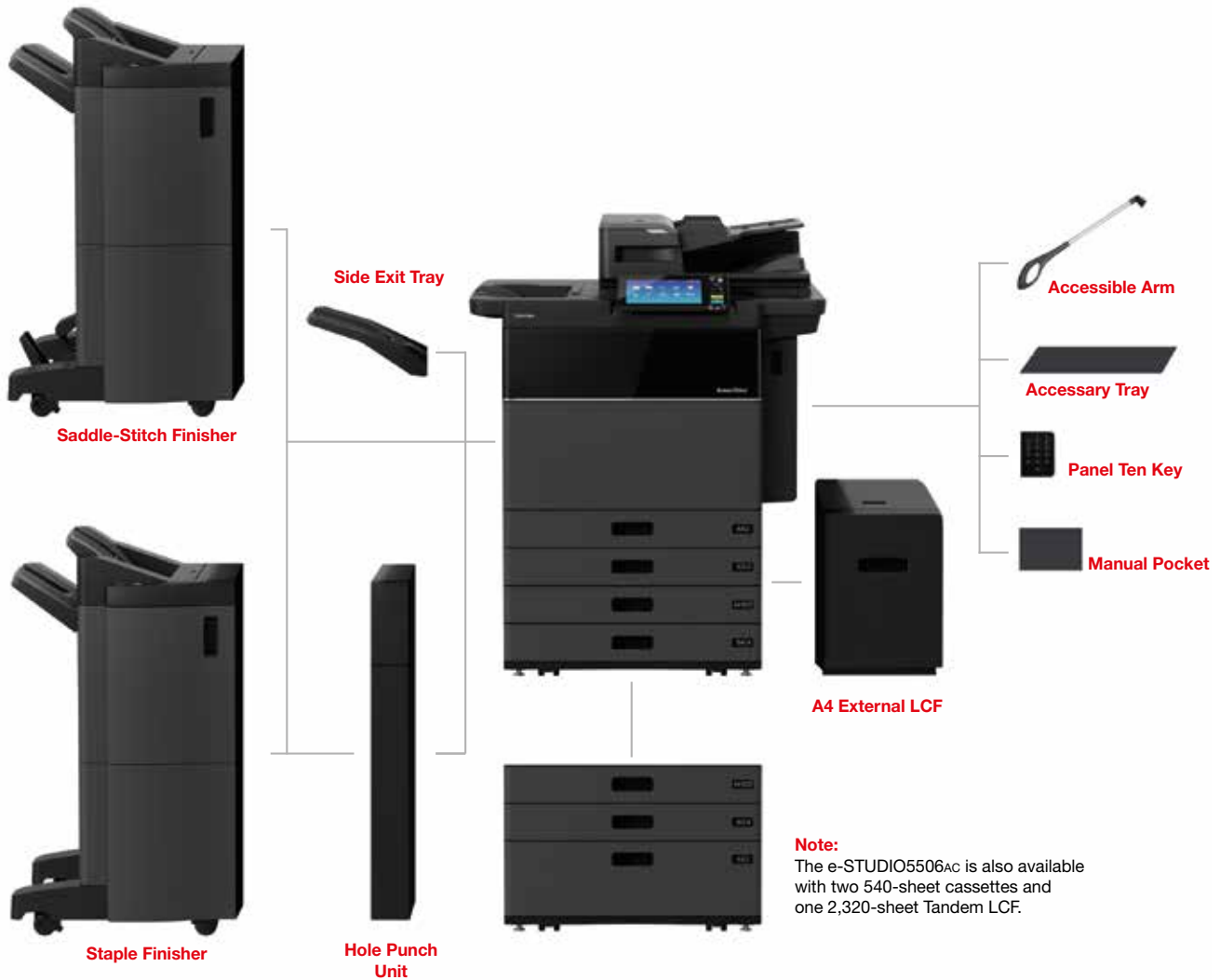
Display icons as buttons to easily access functions or start workflows.

**A large tablet-like touch screen** is your gate to document handling which has never been easier. It lets you work intuitively, helping you access instructions, functions and commands with the swipe of the finger.

Size and order of icons as well as the background image can be customised to meet the individual needs and preferences of users. Enjoy the unique experience of working with a system that understands what you want.



# CONFIGURATION



# HIGHLIGHTS

## Advanced media handling

A vast range of media types and sizes, including banner paper as long as 1,200 mm, combined with advanced colour management and various finishing options allow easy in-house production of impressive, high quality colour documents.

## Multi Station Print Enabler

Toshiba's serverless printing solution allows users to send print jobs from their desktop and retrieve them at any available MFP by simply swiping their badge and authenticating at that device. Making last-minute changes to a print job directly at the MFP or re-printing previous jobs is just as easy.

## Dual Scan Document Feeder

The 300-sheet capacity, high-speed, high-capacity document feeder seamlessly scans both sides of each page in a single pass to produce up to 240 ipm.

# SPECIFICATIONS

## General

<b>Print &amp; Copy Speed</b>	Colour: 55/65/75 ppm (A4) 27/30/37 ppm (A3) Monochrome: 65/75/85 ppm (A4) 30/37/40 ppm (A3)
<b>Warm-up Time</b>	Approx. 15 seconds from low power mode
<b>Paper Size &amp; Weight</b>	Cassettes: A5R-320 x 460 mm, 60-256 g/m <sup>2</sup> Tandem LCF <sup>1)</sup> : A4, 60-256 g/m <sup>2</sup> Bypass: 100 x 148 mm-330 x 483 mm, 60-300 g/m <sup>2</sup> , banner paper (up to 313.4 x 1,200 mm, 90-163 g/m <sup>2</sup> )
<b>Paper Capacity</b>	4x 540 sheets (Cassettes) or 2x 540 sheets (Cassettes) + 1x 2,320 sheets (Tandem LCF) <sup>1)</sup> , 1x 120 sheets (Bypass) Maximum 6,020 sheets
<b>Automatic Duplex</b>	A5R-320 x 460 mm, 60-256 g/m <sup>2</sup>
<b>Controller Type</b>	Toshiba e-BRIDGE
<b>Control Panel</b>	22.9 cm (9") Multi-Touch Colour Panel
<b>Memory</b>	Toshiba Secure HDD 320 GB <sup>2)</sup> , 4 GB RAM
<b>Interface</b>	10Base-T/100Base-TX/1000Base-T, High Speed USB 2.0, WLAN <sup>3)</sup> (IEEE802.11b/g/n), Bluetooth <sup>3)</sup> , Wi-Fi Direct <sup>3)</sup>
<b>Dimensions &amp; Weight</b>	955 x 698 x 1,227 mm (W x D x H), 213 kg

## Print

<b>Resolution</b>	600 x 600 dpi, 1,200 x 1,200 dpi (2 bit, PostScript driver only), 3,600 x 1,200 dpi with smoothing (PostScript driver only, monochrome)
<b>Page Description Language</b>	PCL5e, PCL5c, PCL6 (PCL XL), XPS and PostScript 3 compatible
<b>Supported Systems</b>	Windows 10/8/7/Vista/Server 2008 (32/64 bit), Windows Server 2012/Server 2008 R2 (64 bit), Mac OS X 10.6.8-10.11, Linux/Unix, Citrix, Novell NetWare (NDPS), SAP, AS/400
<b>Network Protocols</b>	TCP/IP (IPv4/IPv6), IPX/SPX, EtherTalk, NetBios over TCP/IP
<b>Colour Modes</b>	Auto-Colour (ACS), Colour, Twin Colour, Monochrome
<b>Colour Settings</b>	ICC profile colour management, RGB substitution, Brightness, Saturation, Contrast, Colour Balance
<b>Mobile Printing</b>	e-BRIDGE Print & Capture, AirPrint, Mopria Print Service, Google Cloud Print
<b>Print Functions</b>	Universal Printer Driver, Driver Templates, Driver plug-ins <sup>3)</sup> , Print from USB, Hold print, Tandem printing

## Scan

<b>Resolution</b>	Maximum 600 x 600 dpi
<b>Scan Speed</b>	up to 240 ipm (300 dpi) in colour and monochrome via Dual Scan Document Feeder
<b>Scan Modes</b>	Auto-Colour (ACS), Colour, Greyscale, Monochrome
<b>File Formats</b>	JPEG, Multi/Single Page TIFF/XPS/PDF, Secure PDF, Slim PDF, PDF/A, Searchable PDF <sup>3)</sup> (and other formats like DOCX, XLSX) <sup>3)</sup>
<b>Scan Functions</b>	WS Scan, Scan to USB, Scan to E-Mail, Scan to File (SMB, FTP, FTPS, IPX/SPX, Local), Meta Scan <sup>3)</sup> , OCR scan <sup>3)</sup> , Scan to Box (e-Filing), WIA, TWAIN

## Copy

<b>Resolution</b>	Scan: 600 x 600 dpi Print: 600 x 600 dpi, 2,400 x 600 dpi with smoothing
<b>First Copy Output Time</b>	Colour: Approx. 6.4/6.4/5.4 seconds Monochrome: Approx. 5.2/4.5/4.1 seconds
<b>Zoom</b>	25-400% (Platen), 25-200% (DSDF)
<b>Copy Modes</b>	Text, Text/Photo, Photo, Printed Image, Map, Image Smoothing
<b>Colour Modes</b>	Auto-Colour (ACS), Full Colour, Twin Colour, Mono Colour, Monochrome
<b>Colour Settings</b>	Hue, Saturation, Colour Balance, RGB adjustment, 5 one-touch modes
<b>Copy Functions</b>	Electronic Sort, Rotate Sort, ID Card Copy, Edge Erase, 2-in-1 / 4-in-1 mode

## Fax<sup>3)</sup>

<b>Communication</b>	Super G3, G3 - (opt. 2 <sup>nd</sup> line), Internet Fax T.37
<b>Transmission Speed</b>	Approx. 3 seconds per page
<b>Compression</b>	JBIG, MMR, MR, MH
<b>Fax Memory</b>	1 GB Transmission/Reception
<b>Network-Fax</b>	Driver for Windows 10/8/7/Vista/Server 2008 (32/64 bit), Server 2012/Server 2008 R2 (64 bit)
<b>Incoming Fax Routing</b>	To shared folders (SMB, FTP, IPX/SPX), E-Mail, e-Filing

## System & Security

<b>Device Management</b>	e-BRIDGE Fleet Management System <sup>3)</sup> , Top Access for remote administration and configuration
<b>System Features</b>	e-Filing document server for secure storage, Document distribution and Print-on-Demand (1 public box, 200 user boxes), 12,060 one-touch templates for storage of personalised settings or workflows, Scan/Fax Preview, Rip-while-Print, e-BRIDGE Open Platform <sup>3)</sup> , Embedded Web Browser, Job Skip
<b>Accounting &amp; Security</b>	Role Based Access, LDAP support, 1,000 department & 10,000 user codes, Card Reader <sup>3)</sup> , Private print, Standard data encryption with Toshiba Secure HDD, Data Overwrite Enabler <sup>3)</sup> , IP and MAC address filter, Port filter, Support of SSL and IPsec <sup>3)</sup> protocols, IEEE802.1x support, IEEE2600.1 compliant <sup>3)</sup> , Scan to Secure PDF

# OPTIONS

<b>EXTERNAL LARGE CAPACITY FEEDER</b>	2,500-sheets capacity, A4, 60-256 g/m <sup>2</sup>
<b>MULTI-STAPLE FINISHER</b>	2 trays, 3,250-sheet capacity 50-sheet multi-position stapling A4R-A3, 60-105 g/m <sup>2</sup> (stapling mode)
<b>SADDLE-STITCH FINISHER</b>	2 trays, 3,250-sheet capacity 50-sheet multi-position stapling 5-sheet center folding Saddle-stitched booklets of up to 60 pages A4R-A3, 60-105 g/m <sup>2</sup> (stapling mode)
<b>HOLE PUNCH UNIT</b>	Available in 2 holes (E), 4 holes (F), 4 holes (S)

<b>SIDE EXIT TRAY</b>
<b>FAX BOARD</b>
<b>WIRELESS LAN / BLUETOOTH MODULE</b> (incl. Wi-Fi Direct)
<b>e-BRIDGE ID-GATE</b>
<b>HARD DISK DRIVE 320 GB<sup>1)</sup></b> (FIPS 140-2 STANDARD)
<b>ACCESSORY TRAY</b>
<b>PANEL TEN-KEY OPTION</b>
<b>DATA OVERWRITE ENABLER</b>
<b>IPsec ENABLER</b>
<b>EMBEDDED OCR ENABLER</b>
<b>MULTI STATION PRINT ENABLER</b>
<b>HARD COPY SECURITY KIT</b>
<b>META SCAN ENABLER</b>
<b>UNICODE FONT ENABLER</b>
<b>ACCESSIBLE ARM</b>



<sup>1)</sup> e-STUDIO5506ac LCF version only

<sup>2)</sup> 1 GB = 1 billion bytes; the actual formatted capacity is less. Available capacity will also be less if software applications are pre-installed.

<sup>3)</sup> Optional



## About Toshiba Tec

Toshiba Tec Germany Imaging Systems GmbH is part of the globally operating Toshiba Tec Corporation, active in various high-tech industrial sectors.

Toshiba Tec Corporation is a leading provider of information technology, operating across multiple industries - ranging from retail, education and business services to hospitality and manufacturing. With headquarters in Japan and over 80 subsidiaries worldwide, Toshiba Tec Corporation helps organisations transform the way they create, record, share, manage and display information.

For more information please contact us:

### **Toshiba Tec Germany Imaging Systems GmbH**

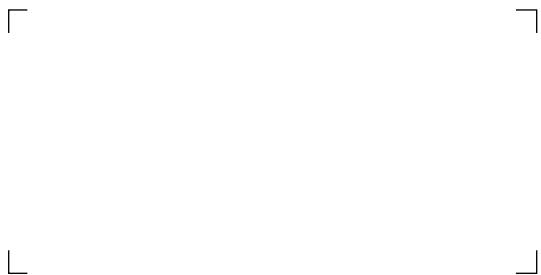
Carl-Schurz-Str. 7  
41460 Neuss  
Germany

### **Telephone**

+49 2131-1245-0

### **Website**

[www.toshibatec.eu](http://www.toshibatec.eu)



**Together Information is Toshiba's vision for how people and organisations create, record, share, manage and display ideas and data.**

**It is based on our belief that the most successful organisations are those that communicate information in the most efficient way .**

**We make that possible through an integrated portfolio of industry-specific solutions, all of which reflect Toshiba's commitment to the future of the planet.**